

Total Care for the Homeless Coalition

YHDP Coordinated
Community Plan



Overview

- ▶ In June 2022, TCHC responded to a Notice of Funding Opportunity (NOFO) from the U.S. Department of Housing & Urban Development (HUD) as a part of the Youth Homeless Demonstration Project.
- ▶ In October 2022, TCHC was awarded approximately \$3.9 million to create a Coordinated Community Plan (CCP) to prevent and end youth homelessness and to create new projects to reach this vision.
- ▶ Over the last several months, TCHC and its partners engaged a diverse array of community stakeholders to develop the CCP, which guides the creation and implementation of new projects with the overall goal of ending youth homelessness
- ▶ This Request for Projects is only available to those eligible agencies serving youth ages 18 - 25.

Vision and Mission

- ▶ To prevent and end youth homelessness.
- ▶ To provide meaningful & tangible support to those in need by providing financial assistance and resources to help them achieve their goals. We strive to create positive, lasting change in our community by providing resources to individuals who are unable to access them on their own. We believe that by providing support, we can reduce poverty, improve health and promote economic stability.



Guiding Principles

- ▶ The *Guiding Principles* framework ensures the community's coordinated response to youth homelessness is equitable, outcomes-driven, and reflective of authentic youth voice, choice, and collaboration.
- ▶ YHDP projects require inclusion of the *Guiding Principles*

Guiding Principles Spotlight

Commitment to Housing First

Equity and Inclusion

Meeting the Needs of Special Populations

Trauma-Informed Care (TIC) & Positive
Youth Development (PYD)

Coordinated Entry

Commitment to Housing First: #2

- ▶ An approach to quickly & successfully connect individuals and families experiencing homelessness to permanent housing without preconditions and barriers, like sobriety, treatment, or service participation.



Equity & Inclusion: #3

- ▶ The TCHC community values representativeness of folks with lived experience and special populations at all levels, including board members, agency leadership, staff, and volunteers.

INCLUSION



of all voices and visions

DIVERSITY



of people and perspectives

EQUITY



in policy and practice

Meeting the Needs of Special Populations: #4

- ▶ The TCHC community recognizes several special populations are more vulnerable to homelessness to include LGBTQ+, justice and foster care systems involved, pregnant and parenting, victims/survivors of sexual trafficking & exploitation, BIPOC, and immigrant youth.



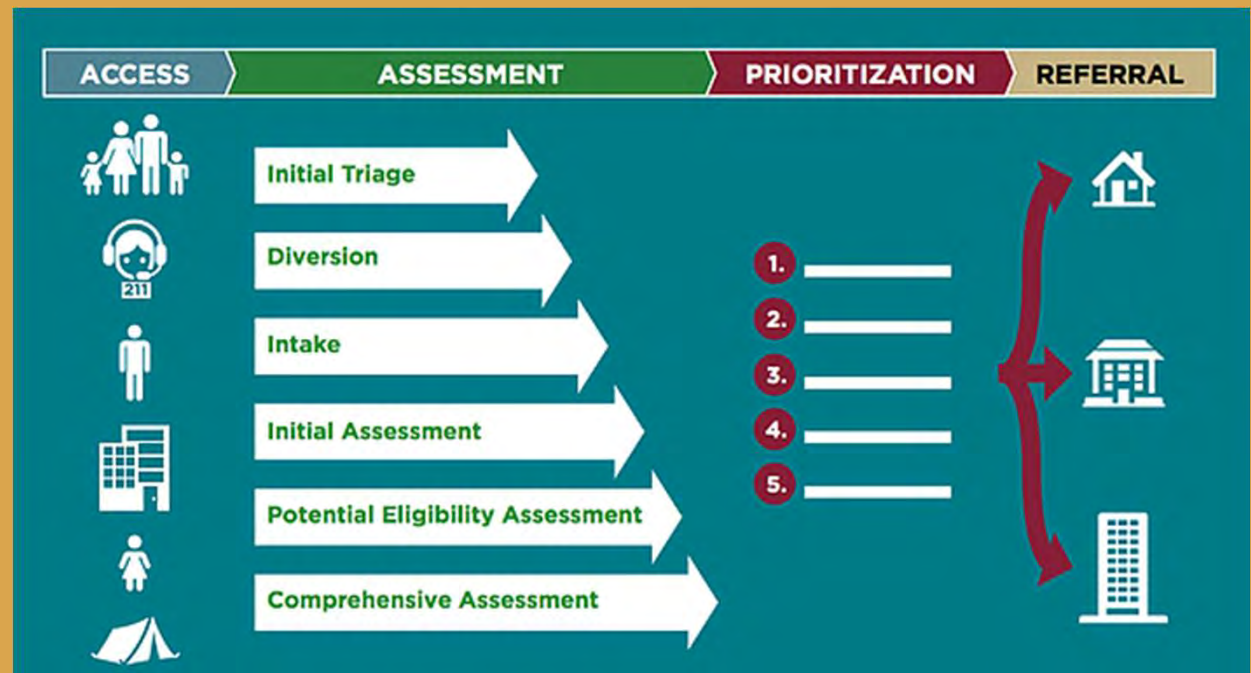
Trauma-Informed Care (TIC) & Positive Youth Development (PYD): #5

- ▶ A TIC approach includes responses that incorporate knowledge about trauma into policies, procedures, and practices; said simply in settings and relationships. It is not about what is wrong with someone, but what happened to someone.
- ▶ PYD is an intentional, prosocial approach that engages youth within their communities, schools, organizations, peer groups, and families in a manner that is productive and constructive; recognizes, utilizes, and enhances young people's strengths; and promotes positive outcomes for young people by providing opportunities, fostering positive relationships, and furnishing the support needed to build on their leadership strengths.



Coordinated Entry: #10

- ▶ The Coordinated Entry System (CES) serves as the front door for young people seeking homeless and housing services.
- ▶ YHDP projects get referrals from CES to serve YYA in their program.





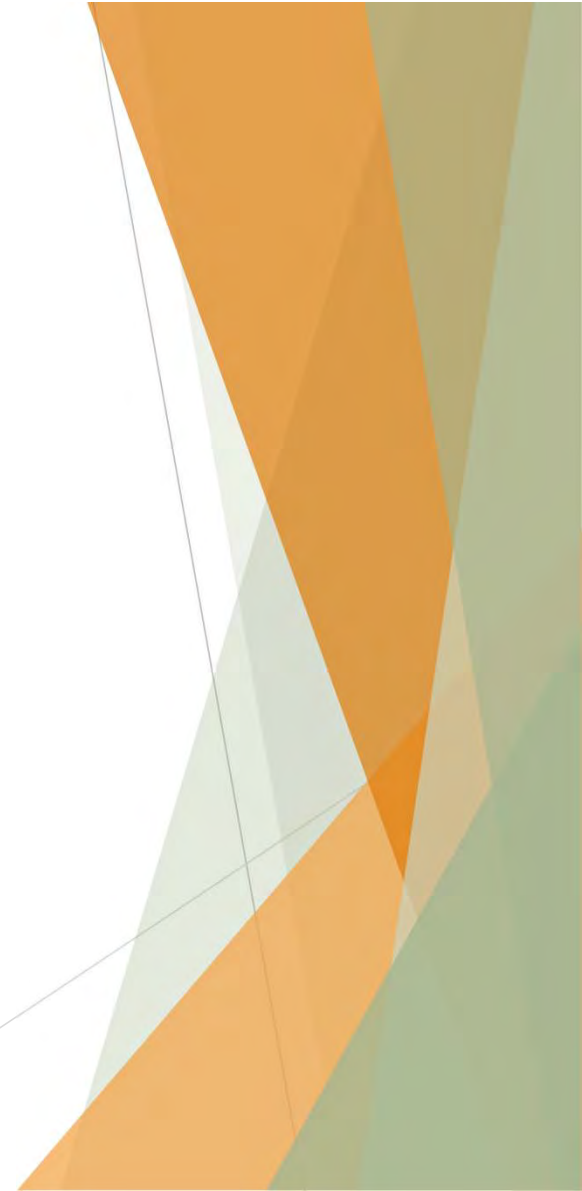
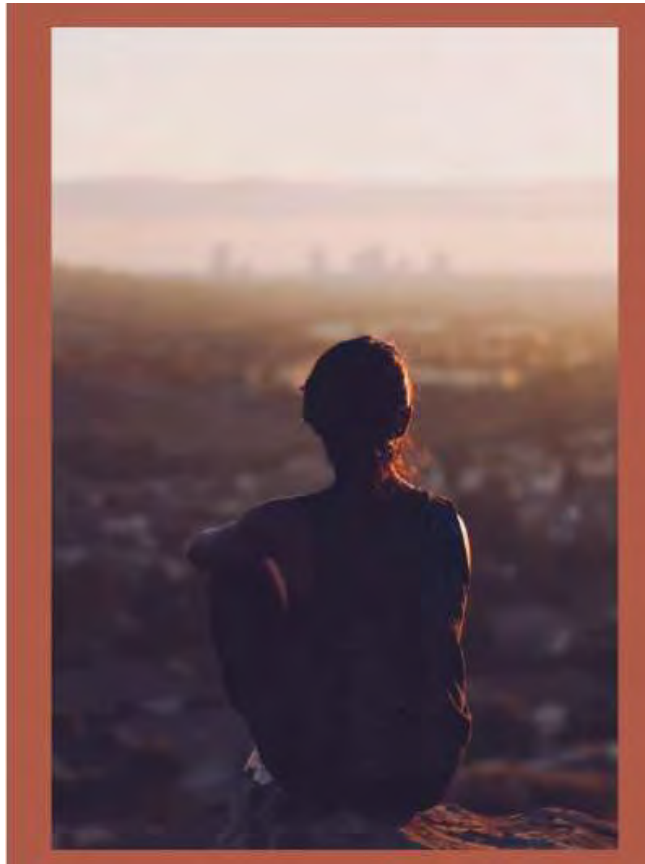
Goals & Objectives



CCP Goals

- 1) The community has the system in place to identify young persons at risk of or experiencing homelessness.
- 2) The community is able to easily link youth to available resources.
- 3) Increase the availability of safe, stable, and permanent housing.
- 4) Increase pathways to education and employment.
- 5) The community has resources, plans, and system capacity in place to prevent and end future experiences of homelessness.
- 6) The community maintains the systems, works towards sustainability, and makes improvements as needed.

Request for Proposals Overview



Timeline

Date	Activity Details
May 18, 2023	NOFO Released
May 18, 2023 – June 8, 2023	Application Period Open
June 2, 2023	Questions Due
June 3, 2023	Questions Posted on CoC Website
June 8, 2023	Project Applications Due to CoC
June 8 – June 15	Technical Review & Ranking Committee meets to review applications
June 15 – June 22	Special YAB & CoC Board meeting to approve application submission
June 20 – June 25	Applicant notification and appeal process
June 25, 2023	CoC Board reviews appeals and makes amendments if necessary. Approved project applications posted to the CoC website.
June 27 th - July 1, 2023	Project applications and Collaborative Application submitted to HUD

Threshold Requirements

- **Active Member of the CoC & Coordinated Entry Participant**
- **New Agencies need to reach out to Dr. Gowdy to begin TCHC member onboarding.**
- **Adhere to YAB Priorities & Guiding Principals**
- **Housing First Participation**
- **Documented and Secured Minimum Match**
- **Application is complete and data is consistent**
- **Project Costs are eligible**
- **Acceptable organizational audit/ financial review**

ELIGIBLE PROJECT TYPES



Permanent Housing - Rapid Rehousing (RRH)

Temporary Housing to Rapid Rehousing (TH-RRH)

Permanent Supportive Housing (PSH)

Supportive Services (Host Homes)

Supportive Services (Other services, navigation, drop-in centers, etc.)

Supportive Services (Coordinated Entry)

Rapid Rehousing

Project Description

This project prioritizes the transition out of homelessness and into permanent housing by providing up to 36 months (with HUD waiver) of housing support and services. Program design will vary, but RRH program can be scattered site or project-based and can include shared housing to help youth sustain housing after assistance ends in order to meet the need of the youth.

Outcomes

- Decrease # of youth experiencing homelessness
- Increase exits to permanent housing
- Attain Education and Employment (increase in income)
- Increase # of youth in stable housing for 12 months or more

YAB Priority Ranking #1

Note: RRH - Shared Housing was ranked #4 by YAB due to the hierarchy of housing options, shared housing is at the bottom of the list for us as a YAB because it lacks the presence of adult partners who can provide additional support.

Temporary Housing - Rapid Rehousing

Core Elements of the Project	<p>This project will allow for transitional housing of youth while providing for a planned exit to permanent housing. Linkage to services will be based on the youth's needs and their desired intervention. YYA will be offered both transitional housing (TH) and rapid rehousing (RRH) assistance and will be able to choose to participate in either or both of the components of this project.</p> <p>Assistance through Joint TH-RRH for youth households will be provided by helping them locate and move into permanent housing using financial assistance, housing focused services and supportive services.</p>
Desired Outcomes	<ul style="list-style-type: none">• Increase # of youth obtaining stable housing; successful housing retention• Attain Education and Employment (increase in income)• Increase # of youth in stable housing for 12 months or more• Decrease # of youth returning to homelessness after 12 months
YAB Priority	Ranking #2

Permanent Supportive Housing

Core Elements of the Project	<p>Permanent Supportive Housing (PSH) is a non-time limited supportive housing intervention for youth or a youth-head of household. PSH is designed to support the most vulnerable youth who will benefit from long-term housing with ongoing support. Housing and services must be low-barrier and offered without preconditions (such as employment, income, absence of criminal record, or sobriety) Services offered must be tailored to each unique individual.</p> <p>This can be offered in a housing community (single location) or as scattered site housing.</p> <p>Chronic Homelessness is not a requirement for this housing type.</p>
Desired Outcomes	Provide long term housing stability for youth who are impacted by severe mental health, substance abuse, disability, and/or trauma who need long term rental assistance with supportive services.
YAB Priority	#3

Supportive Services - Host Homes

Core Elements of the Project	A Pilot Program: The Host Hom/ Kinship Care program will provide an alternative crisis housing option for youth in need of short term assistance. This will be a home-based option for youth unable to access traditional shelter. The program especially targets youth who identify as LGBTQ+, transgender, experience language or other barriers, are pregnant and parenting or exiting foster care.
Desired Outcomes	Increase # youth obtaining stable housing. Successful Housing Retention
YAB Rank	#4

Transitional Housing (TH)

Core Elements of the Project	The project will provide short-term crisis stability utilizing Housing First practices and incorporating youth-choice. It will offer crisis housing to youth 18-24 who are experiencing homelessness that is safe and stable while they are connected to their permanent housing solution.
<ul style="list-style-type: none">• Desired Outcomes	<ul style="list-style-type: none">• Successful exits to permanent housing• Reductions in length of time homeless• Increased connections to education, employment, benefits, and other resources and permanent connections
<ul style="list-style-type: none">• YAB Ranking	<ul style="list-style-type: none">• #4

Supportive Services - Other

Core Elements	<p>Supportive Service Only (SSO), including, but not limited to, projects dedicated to coordinated entry, housing search and placement services, case management, drop-in centers, legal services, or street outreach.</p> <p>Drop-in centers are Youth-focused locations that provide access to basic needs, housing services, peer support, as well as or coupled with street outreach programs.</p> <p>YAB prioritized funding additional drop-in centers in more rural counties (especially outside Horry County). These should be places that are safe, have bilingual staff, conduct coordinated entry assessments, and have access to resources and peer supports. Could also include mobile centers.</p>
Desired Outcomes	Increase # of youth obtaining stable housing; Increase # of youth obtaining successful housing retention; Increased Financial Capabilities /Education and employment
YAB Rank	#5

YAB Priorities

1. **Permanent Housing Rapid-Rehousing**
2. **Joint Transitional Housing/Rapid Rehousing (Joint TH-RRH)**
3. **Permanent Supportive Housing (PSH)**
4. **Host Homes/ Kinship Care /Transitional Housing**
5. **Shared Housing Supportive Services Only (SSO)** *SSO Only Activities include but not limited to case management, drop-in centers, legal services, or street outreach.*



Service Component of Each Grant

▶ Service Components

- ▶ Case Management, housing placement and stability services.
- ▶ Financial assistance: Rental, utility, move in fees/deposits (through access to centralized diversion fund)
- ▶ Connections to health, mental health, transportation, education and employment.
- ▶ Access to and information about mainstream resources.
- ▶ Access to services to meet basic needs

▶ Principals for Diversion/ Intake Expectations

- ▶ Youth Centered Approach
- ▶ Youth Choice
- ▶ Trauma Informed Care
- ▶ Develop opportunities for peer support
- ▶ Budget Note: Allocate funding for required grant training**

Waiver Requests

YHDP grant funds may be used for the following if they are necessary to assist program participants to obtain and maintain housing. Recipients and subrecipients must maintain records establishing how it was determined paying the costs was necessary for the program participant to obtain and retain housing and must also conduct an annual assessment of the needs of the program participants and adjust costs accordingly.

I.C.1.a(10)(a) Security deposits (not to exceed 2 months of rent)		I.C.1.a(10)(g) Payment of rental arrears (up to 6 months)
I.C.1.a(10)(b) Pay for damage to units (not to exceed 2 months rent)		I.C.1.a(10)(h) Payment of utility arrears (up to 6 months)
I.C.1.a(10)(c) Costs to provide household cleaning supplies		I.C.1.a(10)(i) Payment of utilities (Up to 3 months)
I.C.1.a(10)(d) Housing start-up expenses (not to exceed \$300 per participant)		I.C.1.a(10)(j) Pay gas a mileage for participant personal vehicle for trips for eligible services
I.C.1.a(10)(e) Purchase cell phone and service (cost must be reasonable and housing related)		I.C.1.a(10)(k) Payment of Legal fees
I.C.1.a(10)(f) Cost of Internet (costs must be reasonable)		I.C.1.a(10)(l) Payment of insurance, registration and past driving fines

Exemption Requests

I.C.1.b(1) A recipient may provide up to 36 months of Rapid Rehousing rental assistance to a program participant if the recipient demonstrates (1) the method it will use to determine which youth need rental assistance beyond 24 months and (2) the services and resources that will be offered to ensure youth are able to sustain their housing at the end of the 36 months of assistance.

I.C.1.b(2) YHDP recipients may continue providing supportive services to program participants for up to 24 months after the program participant exits homelessness, transitional housing or after the end of housing assistance if the recipient demonstrates: 1) the proposed length of extended services to be provided; 2) the method it will use to determine whether services are still necessary; and 3) how those services will result in self-sufficiency and ensure stable housing for the YHDP program participant.

YHDP recipients may continue providing supportive services to program participants for up to 36 months after the program participant exits homelessness, if the services are in connection with housing assistance, such as the Foster Youth to Independence initiative, or if the recipient can demonstrate that extended supportive services ensures continuity of case workers for program participants.

I.C.1.b(5) YHDP recipients may provide payments of up to \$1000 per month for families that provide housing under a host home and kinship care model, provided that the recipient can show that the additional cost is necessary to recruit hosts to the program.

YHDP Submission

Email a copy of the project application exported from e-snaps (do not submit application at this time) and the following documents to yhdp@echousing.org.

- **Organization Policy and Procedure/Operational Manual**
- **Financial Policies and Procedures (if not included in the above-mentioned documents)**
- **Organizational Bylaws**
- **Board Roster – identify any board members that qualify as youth with lived experience.**
- **Organizations most recent audit or financial statement.**

Next Steps

Want to help but your organization does not want to apply as a primary grant recipient? Agencies looking to partner, be a contractor or subrecipient should join the Virtual Partner Meet-up.

- ▶ **Virtual Partnership Meet-Up: Tuesday May 30, 2023 @ 1pm**
Those agencies looking to partner with other potential agencies can participate in a virtual meet-up and learn more about connecting with other Youth Serving Agencies. Participants can join the virtual zoom meeting by following the link: <https://us02web.zoom.us/j/4946214139>

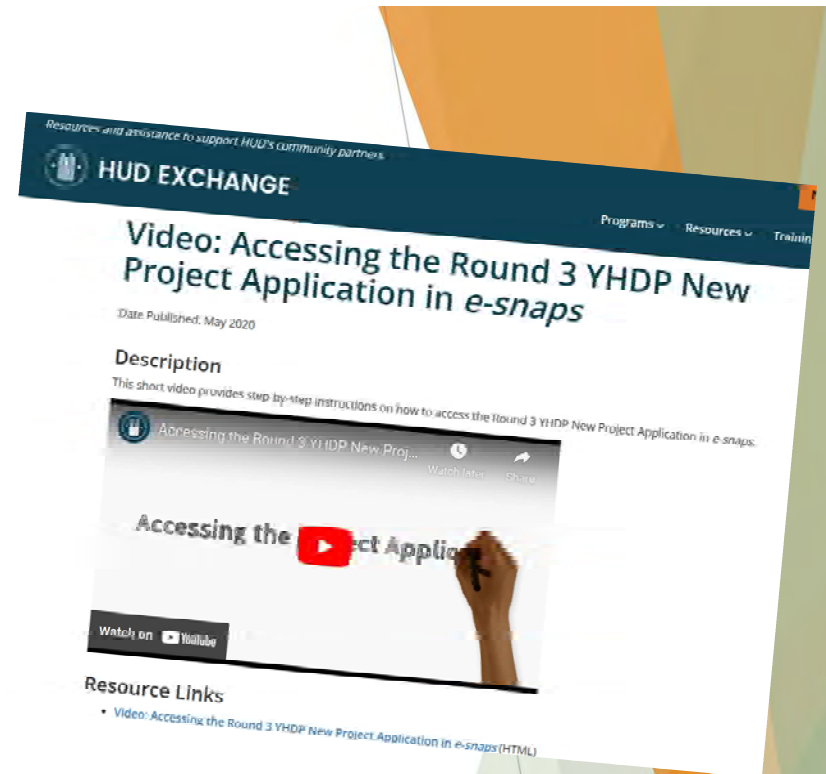


Pro Tip

- ▶ Start Now!
- ▶ Get Your Projects into e-snaps
- ▶ Check Out the YHDP e-snaps video
- ▶ Have your questions prepared for June 1st

- ▶ **In-Person Local E-Snaps Training June 1, 2023 (1pm - 3pm)**

ECHO will host a YHDP e-snaps project application training for project applicants on June 1, 2023. Potential project applicants looking for help navigating e-snaps should attend. The location is the Bevis Training Center, Pee Dee Mental Health Center, 125 East Cheves Street, Florence, SC 29560. Please RSVP to the tchc.coc.secretary@gmail.com if you plan on attending.



QUESTIONS?



▶ WEBPAGE RESOURCES:

- ▶ www.tchcsc.org. & HUD YHDP Resource Page - Round 6
- ▶ E-Snap Training Guides
- ▶ Submit Questions to yhdp@echousing.org